

# **Bernalillo County Commissioner Report**

**March 31, 2015**



**Encounters - Bernalillo County**  
**For the nine months ended March 31, 2015**

<b>Source</b>	<b>Bernalillo County Encounters</b>
Charity Care - Bernalillo County	7,877
EMSA	571
IHS	1,740
Medicaid	188,163
Medicare	116,780
Uninsured	30,622
HMO's & Insurance	119,044
All Other	

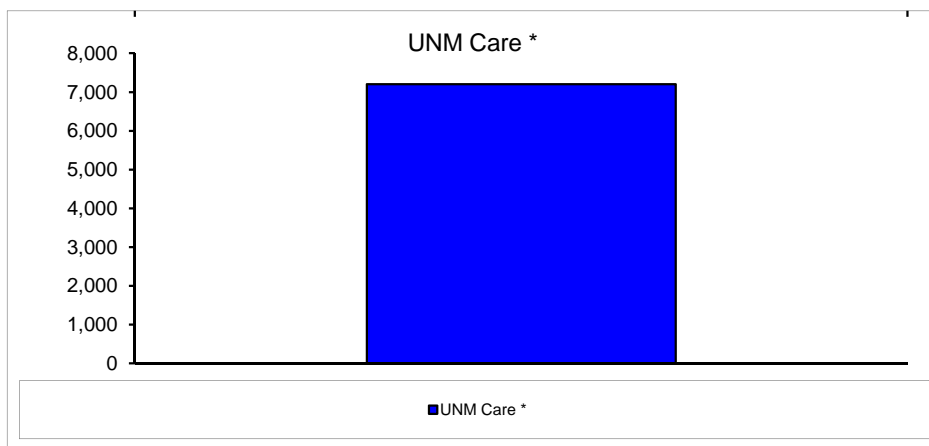
**Financial Assistance to Patients by County\***  
For the nine months ended March 31, 2015

<b>County</b>	<b>Charity Care Cost</b>	<b>Uninsured Cost</b>	<b>Total Uncompensated Care Cost</b>
Bernalillo	39,788,708	\$ 20,393,376	\$ 60,182,085
Catron	795	2,459	3,254
Chaves	50,631	151,546	202,177
Cibola	109,227	217,278	326,505
Colfax	1,232	4,273	5,506
Curry	40,367	55,627	95,994
De Baca	83	-	83
Dona Ana	61,180	468,502	529,682
Eddy	94,531	203,060	297,591
Grant	169	9,927	10,096
Guadalupe	4,370	5,221	9,591
Harding	-	-	-
Hidalgo	556	-	556
Lea	8,043	45,283	53,326
Lincoln	4,356	47,795	52,151
Los Alamos	407	3,126	3,533
Luna	2,056	17,230	19,286
Mc Kinley	64,561	241,147	305,708
Mora	-	19,007	19,007
Otero	26,822	183,841	210,662
Quay	723	7,797	8,520
Rio Arriba	38,997	173,479	212,476
Roosevelt	-	93,939	93,939
San Juan	2,417	175,203	177,620
San Miguel	596	74,979	75,575
Sandoval	179,134	1,928,522	2,107,656
Santa Fe	104,112	759,266	863,378
Sierra	323	138,223	138,547
Socorro	23,209	187,642	210,851
Taos	265,848	104,871	370,719
Torrance	29,588	277,443	307,031
Union	2,571	1,274	3,845
Valencia	702,935	1,663,453	2,366,388
Out Of State	-	2,667,768	2,667,768
<b>Grand Total</b>	<b>\$ 41,608,546</b>	<b>\$ 30,322,558</b>	<b>\$ 71,931,104</b>

\* Based on collection

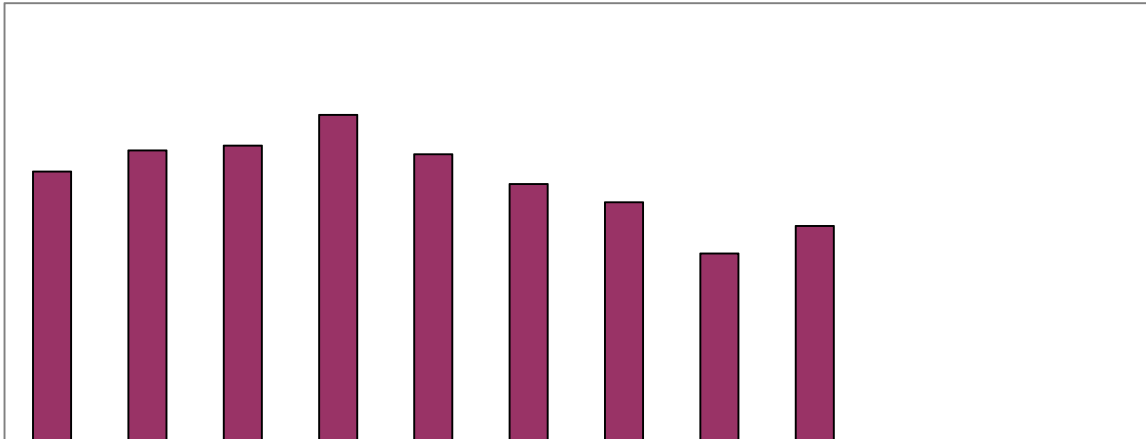
### UNM Care As of March 2015

Category	Enrollment
UNM Care *	7,203



\* UNM Care includes 184 Native American Enrollees as of 3/31/2015.

**Emergency Services**  
**For the six months ending March 31, 2015**



**Number of FTE's and Retention Report  
For the nine months ended March 31, 2015**

**Number of FTE's    Number of FTE's**

<b>Assets</b>	<b>March 2015</b>	<b>June 2014</b>
<i>(In Thousands)</i>		
Current assets:		
Cash and cash equivalents	\$ 161,213	106,311
Marketable securities	34,522	34,329
Receivables:		
Patient, net	102,811	99,351
University of New Mexico	1,002	1,718
Estimated third-party payor settlements	35,622	36,012
Bernalillo County treasurer	14,211	1,547
Other	32,871	21,004
Total current assets	382,252	300,272
Noncurrent assets:		
Assets whose use is limited:		
Held by trustee	40,065	43,494
By UNM Hospital Clinical Operations Board	21,183	21,113
Capital assets, net	240,271	247,860
Total 11 372.96 588.32 Tm	[(2)-5.5(1)-5.5(,)4.8(t)4.03ernallitar(1)-5.5(,)4.8(t)4.03e ,83	



**UNM HOSPITALS**

Page 9

Statements of Revenues, Expenses, and Changes in Net Assets

For the nine months ended March 31, 2015

### Financial Assistance to Bernalillo County Patients by Zip Code

For the nine months ended March 31, 2015

A - Number of Indigent Bernalillo County resident outpatients by zip code and cost of care

B - Number of Indigent Bernalillo County resident inpatients by zip code and cost of care

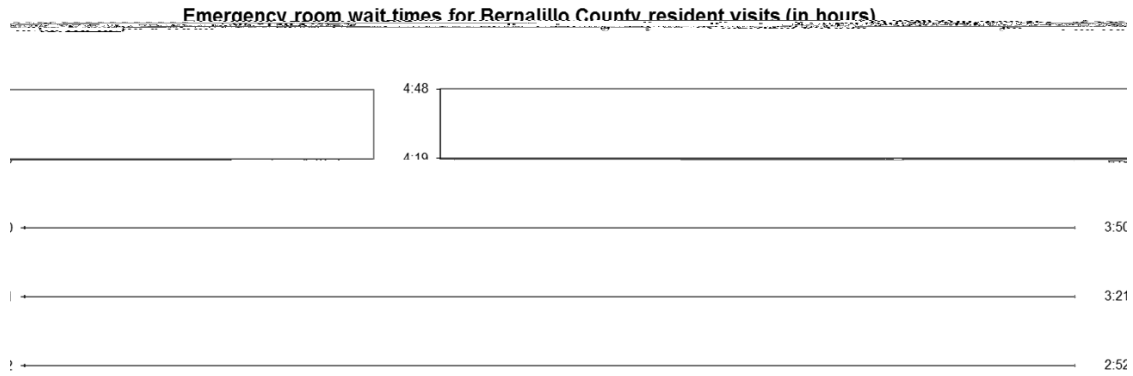
F - Total cost of care for Bernalillo County indigent patients by zip code with cost methodology

Zip Code	A	A Cost	B	B Cost	F
87008	1	\$ 6,837	81	\$ 10,580	82 \$ 17,417
87022	8	52,272	336	41,024	344 93,296
87047	11	298,297	249	84,757	260 383,055
87059	30	109,037	734	215,851	764 324,888
87101	2	112	50	28,628	52 28,740
87102	212	1,673,724	4,760	1,794,288	4,972 3,468,013
87103	4	14,040	90	18,215	94 32,255
87104	62	270,099	2,002	570,588	2,064 840,686
87105	487	4,034,860	12,551	5,007,752	13,038 9,042,612
87106	184	2,785,414	3,761	1,603,226	3,945 4,388,640
87107	178	1,475,660	4,803	1,463,900	4,981 2,939,560
87108	357	2,115,953	9,470	3,348,298	9,827 5,464,250
87109	175	1,151,233	3,945	1,224,766	4,120 2,375,999
87110	191	1,780,655	4,699	1,892,459	4,890 3,673,114
87111	111	695,152	3,611	1,722,173	3,722 2,417,325
87112	185	1,146,766	4,997	1,565,469	5,182 2,712,235
87113	56	821,707	1,259	464,424	1,315 1,286,131
87114	114	705,294	3,689	1,125,730	3,803 1,831,024
87115	1	22,202	8	7,732	9 29,934
87116	5	16,123	62	26,279	67 42,402
87117	1	104	6	557	7 662
87119	3	6,586	28	6,626	31 13,212
87120	148	1,183,426	4,526	1,366,128	4,674 2,549,554
87121	512	3,959,208	15,424	5,826,130	15,935 9,785,338
87122	16	114,467	450	222,565	466 337,033
87123	228	2,167,692	7,064	2,337,356	7,292 4,505,048
87125	19	344,693	286	118,168	305 462,861
87131	1	37	27	7,691	28 7,728
87151	7	86,518	49	40,931	56 127,449
87153	1	1,812	9	901	10 2,713
87154	-	-	110	33,681	110 33,681



Description	Count of Visits					Examples of Illnesses
	Q3 FY15	Q2 FY15	Q1 FY15	Q4 FY14	Q3 FY14	
Factors Influencing Health Status and Contact with Health Service	4,544	4121	4002	3101	4,547	Routine exam, follow up to surgery, child and infant wellness checks, or other therapeutic drug use, screening exams
Mental Disorders	4,160	2268	3836	2869	4,644	Alcohol abuse, depression, post traumatic stress disorder
Diseases of Musculoskeletal and Connective Tissue	2,363	2593	3579	2364	4,164	Joint pain, back pain, pain in limb, arthritis
Signs, Symptoms and Ill-Defined Conditions	1,514	3053	3417	3274	5,087	Abdominal pain, chest pain, cough, headache, rash, shortness of breath
Endocrine, Nutritional, and Metabolic Diseases and Immunity Diso	2,517	2391	3021	2297	3,426	Diabetes, high blood cholesterol, diseases of thyroid

**Emergency Room Wait Times for Bernalillo County Resident Visits (in hours)  
For the Eighteen months ended March 2015**



**For the twelve months ended March 31, 2015**

Medicaid	\$	277,102,784
Medicare		170,512,208
Insurance		233,389,827
Other Patient		28,433,048
Bernalillo County mill levy		92,020,266
Other		79,023,916

Salaries & Benefits	\$	44,490,784
Medical services		15,362,031
Medical supplies		14,646,461
Depreciation		3,464,448
Equipment		4,032,570
Purchased services		4,322,008
Occupancy		1,538,530
Pathways		1,117,520
Other		3,045,914
Total Expense	\$	92,020,266



Emergency Medicine	\$	5,120,487
Family Medicine		7,922,180
Hospitalist		2,348,367
Internal Medicine		18,601,719
Neonatal Perinatal Medicine		2,762,570
Neurology and Pain		7,638,610
New category		394,601
Obstetrics & Gynecology		5,316,728
Oncology		4,288,344

Salaries and Benefits	\$	9,332,765
Medical services		2,168,654
Medical supplies		815,026
Depreciation		235,671
Equipment		181,626
Purchased services		269,716
Occupancy		387,149
Other		233,413
Total Expense	\$	13,624,020



